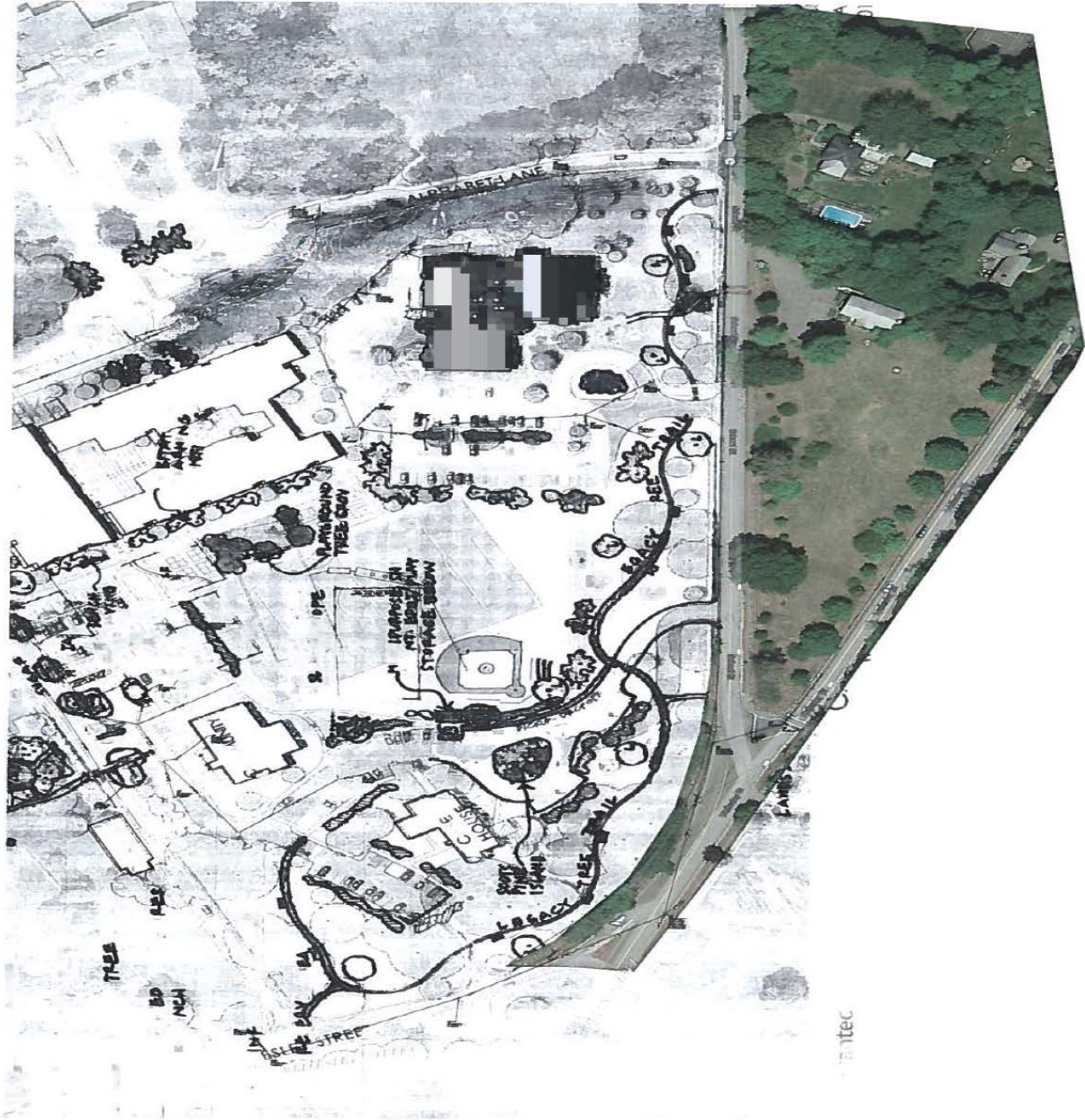


# Case Park Restoration Project

Phase 1

2015-2019



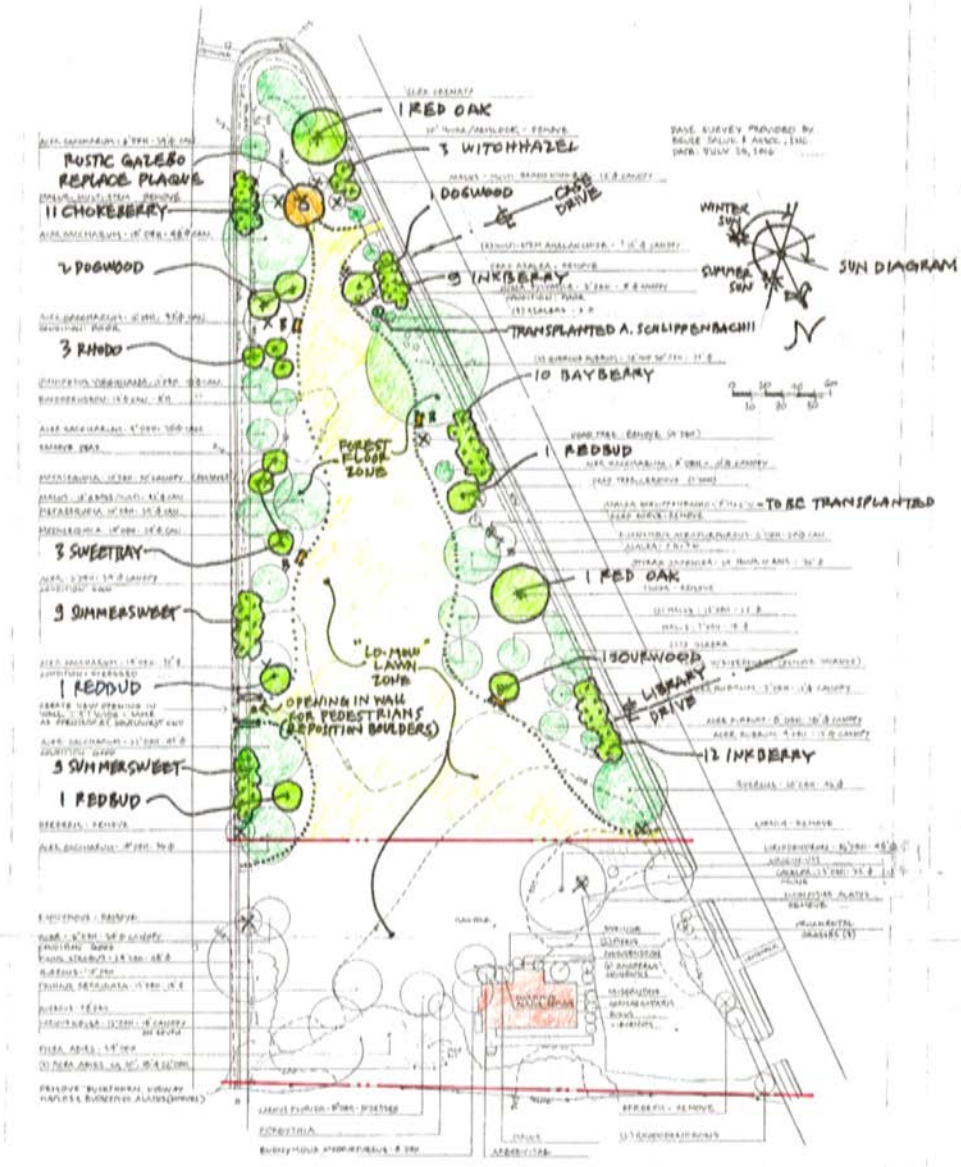
itec

# Background

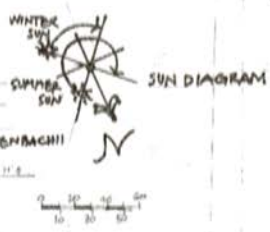
- 1.5 acre park gifted to Weston by the Case sisters in 1946
- Weston Garden Club previous stewards
- Commemorative Bronze plaque

# Current state of Case Park

- Dead or dying trees and shrubs removed
- Soil testing 2015: very poor
- Taps on site but no irrig system/hoses
- Memorial plaque stolen years ago.



DATE SURVEY PERFORMED BY:  
 BOULE SAVIN & ASSOC., INC.  
 DATE: JULY 15, 1968



ALL REMOVALS INDICATED WITH X  
 PROPOSED BENCH #118





# Timeline

	2015	2016	2017	2018	2019
Jan		*	* ^	O	
Feb		*	*	O	
Mar		*	*	O	
Apr		*	*	A O	A
May		*	*	\$ O +	
Jun	Site surv	*	*	\$ O +	
July	CPC\$	*st	*	\$ i O +	
Aug	*	*st	* O	i O +	
Sept	*	*st ^	* O	# i	
Oct	*	* ^	* O	#	
Nov	*	* ^	* O		
Dec	*	* ^	* O		
	<ul style="list-style-type: none"> <li>*= landscape design</li> <li>A= arbor day planting</li> <li>st=soil testing</li> <li>^ =topographical survey</li> </ul>	<ul style="list-style-type: none"> <li>\$ = procurement</li> <li>+ = layout/soil prep</li> <li>O = outreach</li> <li># = planting</li> </ul>	<ul style="list-style-type: none"> <li>i = irrigation</li> </ul>		



# Budget Phase 1

<b>Installation of Trees and Shrubs</b>	15 trees	63 shrubs	Includes purchase, prep, planting	24,182.
<b>Native Pollinator Garden/ monument circle Plus plaque</b>	Drought tolerant Hummingbird and butterfly garden plugs	Prep and plant. Replacement bronze plaque	\$129/tray \$2000.00	4,064.
<b>Tree &amp; Shrub removal, stump grinding, transplanting</b>	11 dead/dying trees	7 invasive shrubs		5,581.
<b>Forest Floor Treatment</b>	Remove existing grasses/weeds	Apply amendments	Seed meadow mix with drought tolerant fescue	9,290.
<b>Install permanent irrigation heads</b>	100' pipe and lockable faucet on each side of park			2,000.
<b>Total Projected Cost</b>				45,117.

# Future Phases

- Restore Cases sisters' memorial circle-  
possibility of bench(es)
- Open pedestrian access Wellesley Street
- Self-guided unpaved Tree trail, walking path
- Bird interests: stone birdbath, blue-bird boxes

Thank You!

Laura J. Perry

Representing Weston's Tree Advisory Group